

- GENERAL ELEVATION NOTES:**
- HEIGHT OF BUILDING TO T.O. TALLEST WALL PANEL = 40' - 0"
 - HEIGHT TO S.O. ROOF DECK AT RIDGE = 36' - 7"

MATERIAL LEGEND:

PAINT

- | | | | | |
|------|-------------|-----------------|---------------------------------|--|
| PT-1 | PANT COLOR: | EXTRA WHITE | SHERWIN WILLIAMS - SW7006 | |
| PT-2 | PANT COLOR: | MONORAIL SILVER | SHERWIN WILLIAMS - SW7663 | |
| PT-3 | PANT COLOR: | GRAY SHINGLE | SHERWIN WILLIAMS - SW7670 | |
| PT-4 | PANT COLOR: | RED ACCENT | CUSTOM COLOR - CMYK 5,100,100,0 | |

NOTE: ALL EXTERIOR WALL SURFACES ALONG THE BUILDING PERIMETER TREATED WITH GRAFFITI RESISTANT RESIN FROM GROUND TO 8 FEET ABOVE

EXTERIOR

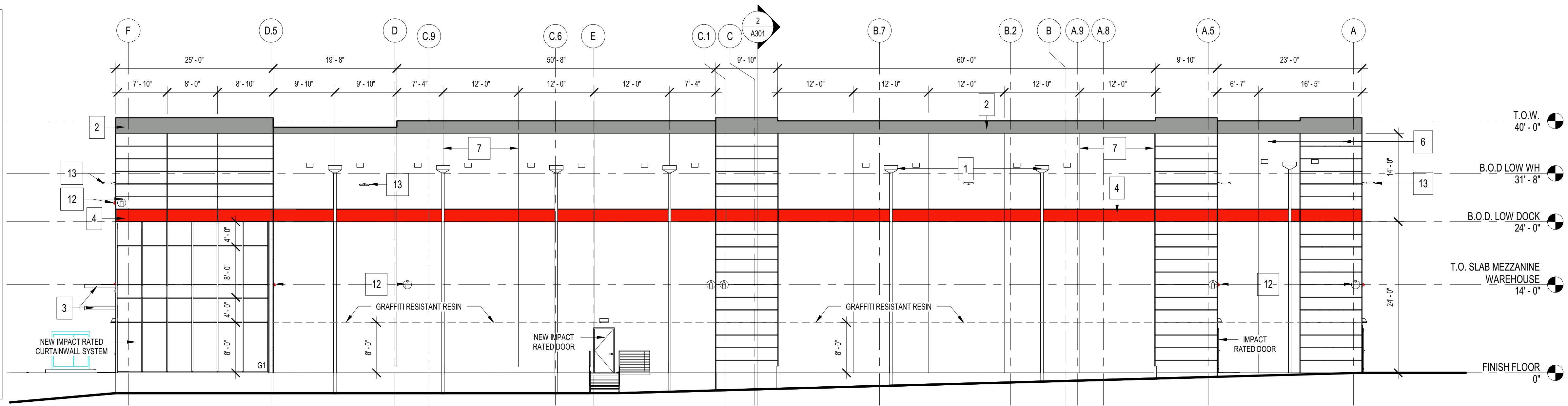
- | | | |
|----|--------------|-----------------------------------------------------------------------------------------------------------------------------------------------------------------------------|
| G1 | GLASS SIZE: | 1" - 1.516" |
| | GLASS TYPE: | THICK INSULATED TEMPERED |
| | FRAME DEPTH: | 6" |
| | RATING: | LARGE AND SMALL MISSILE
ASTM E 1886/1996; TAS 201 - 203
FLORIDA STATE-WIDE PRODUCT APPROVAL
APPROVED HIGH VELOCITY HURRICANE ZONE
BLAST MITIGATION UFC 4-010-01 |

INTERIOR

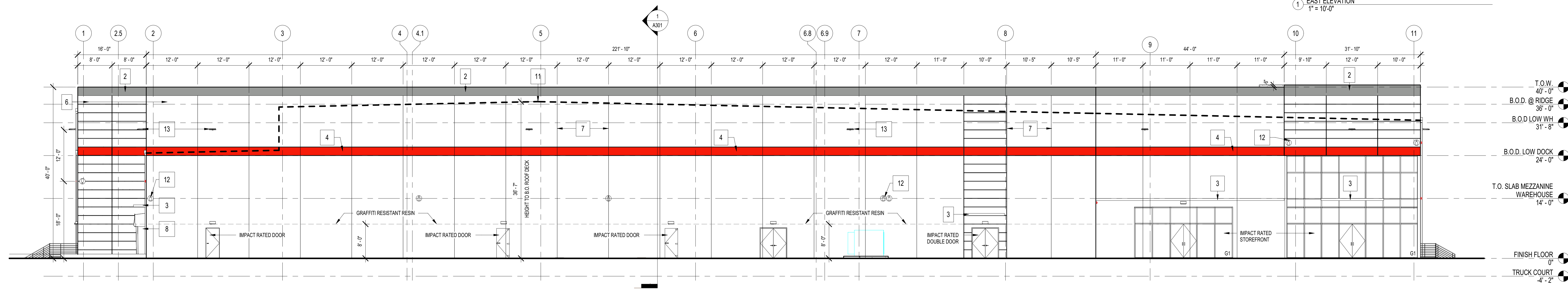
- | | | |
|----|-------------|----------------------------------------------------------------------------------------------|
| G2 | GLASS SIZE: | 14" THICK CLEAR TEMPERED CAT II |
| | | IMPACT-RATED GLAZING UNIT (HEAT-TREATED
SAFETY GLASS THAT BREAKS INTO SMALL
PARTICLES) |

ELEVATION KEY:

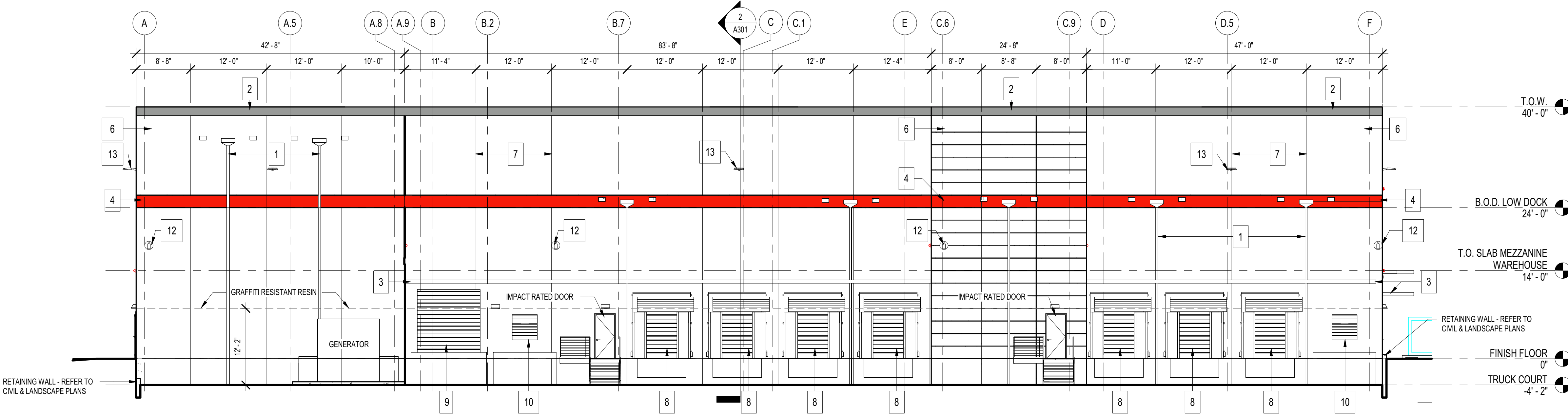
- | | |
|----|-------------------------------------------------------------------------------------------------------------------------|
| 1 | SCUPPERS, OVERFLOW SCUPPERS, AND DOWNSPOUTS TO BE PREFINISHED METAL MATCHING PT-1 BASED ON MANUFACTURER STANDARD COLORS |
| 2 | COPING CAP TO BE PREFINISHED METAL MATCHING PT-3 BASED ON MANUFACTURER STANDARD COLORS |
| 3 | PREFABRICATED BLACK METAL CANOPIES BASED ON MANUFACTURER STANDARD COLORS |
| 4 | HORIZONTAL REVEALS TO BE PAINTED PT-4 |
| 5 | VERTICAL REVEALS TO BE PAINTED PT-4 |
| 6 | PREFABRICATED ARCHITECTURAL CONCRETE WALL PANELS TO BE PAINTED PT-1 |
| 7 | CONCRETE PANEL JOINT SEALANT TO MATCH PANEL COLOR BASED ON MANUFACTURER STANDARD COLORS |
| 8 | OVERHEAD DOOR WITH DOCK SHELTER |
| 9 | OVERHEAD DOOR |
| 10 | COMPACTOR DOOR |
| 11 | RIDGE OF ROOF |
| 12 | CAMERA |
| 13 | WALLPACK |



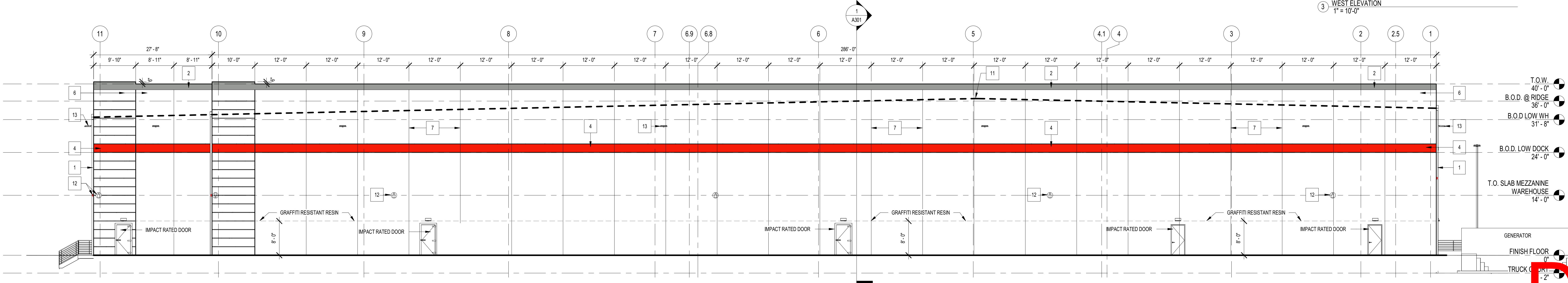
1 EAST ELEVATION
1" = 10'-0"



2 SOUTH ELEVATION
1" = 10'-0"



3 WEST ELEVATION
1" = 10'-0"



4 NORTH ELEVATION
1" = 10'-0"